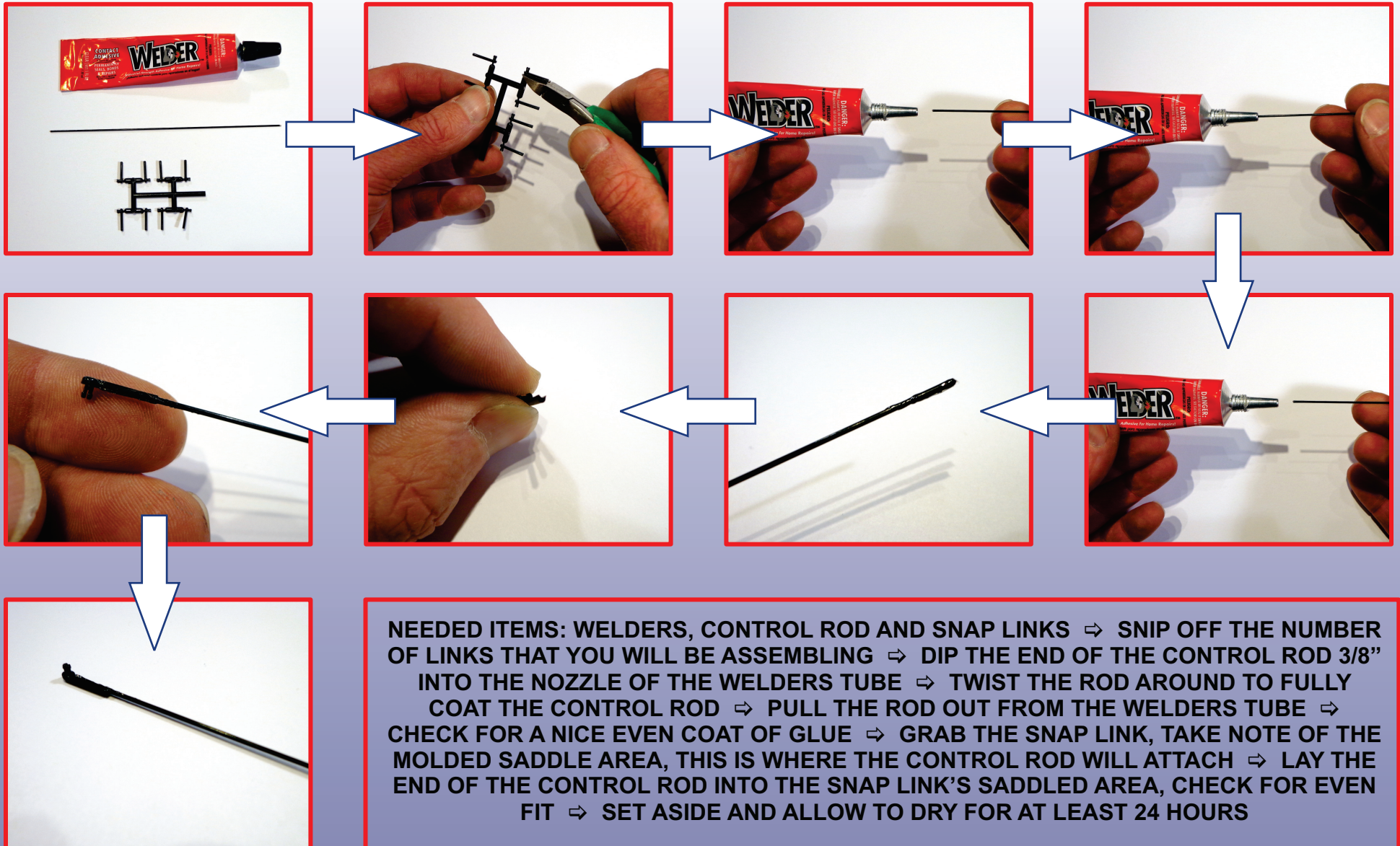


Snap Link Assembly INSTRUCTIONS



NEEDED ITEMS: WELDERS, CONTROL ROD AND SNAP LINKS ⇒ SNIP OFF THE NUMBER OF LINKS THAT YOU WILL BE ASSEMBLING ⇒ DIP THE END OF THE CONTROL ROD 3/8" INTO THE NOZZLE OF THE WELDERS TUBE ⇒ TWIST THE ROD AROUND TO FULLY COAT THE CONTROL ROD ⇒ PULL THE ROD OUT FROM THE WELDERS TUBE ⇒ CHECK FOR A NICE EVEN COAT OF GLUE ⇒ GRAB THE SNAP LINK, TAKE NOTE OF THE MOLDED SADDLE AREA, THIS IS WHERE THE CONTROL ROD WILL ATTACH ⇒ LAY THE END OF THE CONTROL ROD INTO THE SNAP LINK'S SADDLED AREA, CHECK FOR EVEN FIT ⇒ SET ASIDE AND ALLOW TO DRY FOR AT LEAST 24 HOURS